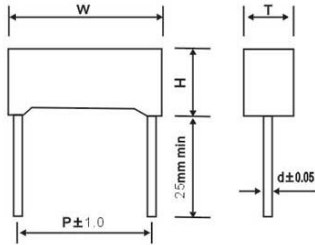


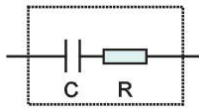
R.C Modules [Electronic Arc Deflector]

Outline Drawing



A capacitor and a resistance are constituted in series, and encapsulated with epoxy resin or plastic enclosure.

Structure Drawing



Features

- Constituting a resonance circuit to filter interference and absorb noise
- Definite safety protection and good anti-pulse ability
- Integrative design convenient for installation and liability improvement
- Applicable to alternative current-direct current occasions such as noise reduction of power over line, digital lathe, hi-fi equipment, etc.

Specifications

Reference Standard	IEC 60384-14	
Climatic Category	40/100/21	
Rated Voltage	250VAC	
Capacitance Tolerance	$\pm 10\%$ (K), $\pm 20\%$ (M)	
Voltage proof	1200VDC(5s)	
Insulation Resistance	$\geq 75000M\Omega$ $CR \leq 0.33\mu F$ $\geq 2500s$ $CR > 0.33\mu F$	(20°C, 1min)